

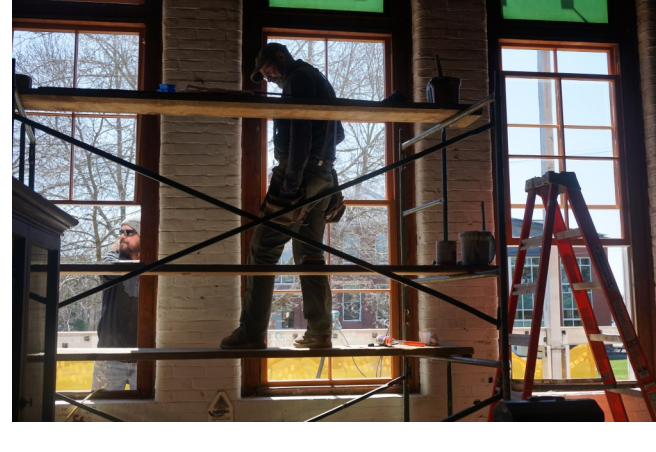
# Inside the L.C. Bates Museum

## Museum Summer Camps Are Amazing Learning Experiences

### Jane's Walk Starting at the Museum May 4

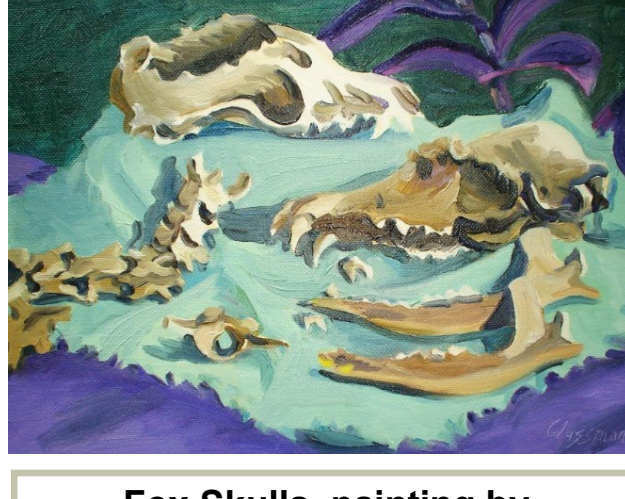
May 2024

#### Art Exhibition Opening



#### Window Preservation Continues

The L. C. Bates Museum building is really an historic artifact, teaching tool, and wonderful example of Romanesque Revival architecture. Four windows on the south wall were recently conserved and now three more are in the process of being preserved by Steve Dionne and Sons. The windows sash and moldings are taken out and restored in their workshop and then returned to their locations in the museum. Generous and necessary donation support is making this important work possible.



#### Fox Skulls, painting by Nancy Glassman

Transitions, the summer 2024 art exhibit will open with a reception for artists on Saturday, May 11 from 4 PM. to 6 PM. Come meet the artists, tour the exhibition and enjoy refreshments provided by the Colby Arts and Humanities. The exhibit includes the work of over 20 Maine artists.

The Transitions exhibition is the result of a collaborative effort between the L.C. Bates Museum staff and two Colby College students, Sofia Escobar Amaya '26 and Lee Trombly '26, under the supervision of Professor Véronique Plesch.

#### Saturday, May 4, 10 AM Jane's Walk ME– Explore the GWH Campus History and Landscape

As part of Jane's Walk take a walking tour of the museum's architecture and the GWH campus near the museum including buildings, the winding road and pond behind the museum. We will talk about the Maine architect William Miller of Lewiston, who designed the museum and 4 other buildings on campus and Parker of Olmsted Firm's design of the now Easler Road and the "Artificial", a pond full of wetland wildlife.

Jane's Walk is a global festival of free, volunteer-led walking conversations inspired by community activist Jane Jacobs. Jane's Walks combine the simple act of exploring a place with personal observations, local history, and civic engagement.

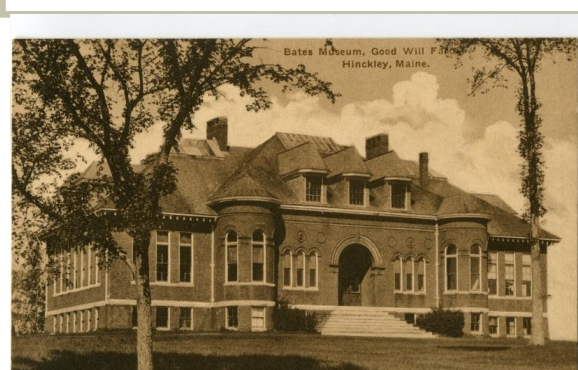
#### Newsletter Nature Fact



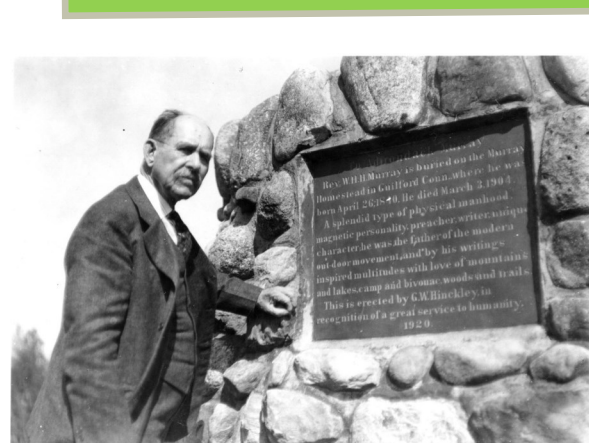
#### Waved Sphinx *Ceratomia undulosa*

Twenty years ago, helpful Good Will students interning at the museum began to make a mounted collection of insects found on campus. They collected, researched, and displayed them in insect cases. This Waved Sphinx is part of their collection. Waved Sphinx are found in the United States, and southern Canada, east of the Rocky Mountains. Adult moths are strictly nocturnal, hiding away even as dawn approaches.

#### GWH History



Historic Image of LCB Museum



#### Adirondack Murray Tablet

G. W. Hinckley, the founder of Good Will, developed and enjoyed the trails and monuments in Sunset Park. He is pictured looking at the slate tablet on the Adirondack Murray monument. Hinckley recognized Murry as a leader in the outdoor movement and author of books including *Camping in the Adirondacks*.

#### Conservation Workshop Monday, May 6 from 9:30 AM to 2:30 PM. Join a Collections Care workshop presented by conservator Ron Harvey. This informative program funded by a grant from the National Endowment for the Humanities.

#### Museum Summer Day Camps

L. C. Bates Museum summer day camps explore the museum collections and the Good Will-Hinckley trails to provide fun learning for children. The camps focus on hands-on experiences including visiting the pond with nets in hand, printing on an early letter press, making clouds in a bottle, collecting minerals and much more. For more information contact the museum. The camps include:

- Dig Into History Camp** June 24- 28
- Earth And Space Camp** July 1- 3
- Eco Exploration!** July 8-12
- Nature Camp** July 15-19
- Wetlands Camp** July 22-26
- Naturalist Camp** July 29 - Aug 2

#### Museum Volunteers Needed

Please come join the museum team and help provide educational activities and events for visitors from our community. Or, help research and catalogue museum collections.

Join the fun! Become an L.C. Bates Museum member!

#### Member Benefits

- Announcements and invitations to events and exhibit openings
- Museum Newsletter
- Free admission to the museum
- 10% discount at the museum gift shop!

Call or Email the museum for information for Membership Information

Interested in making a contribution to the museum? Contact us at [lcbates@gwh.org](mailto:lcbates@gwh.org) or 207-238-4250 if would like to information about making a donation. Your donations help make the museum and its educational experiences possible!

#### May 2024 Events and Programs

#### Saturday, May 4, 10 AM—Jane's Walk ME– Explore the GWH Campus History and Landscape

As part of Jane's Walk take a walking tour of the museum's architecture and the GWH campus near the museum including buildings, the winding road and pond behind the museum. We will talk about the Maine architect William Miller of Lewiston, who designed the museum and 4 other buildings on campus and Parker of Olmsted Firm's design of the now Easler road and the "Artificial", a pond full of wetland wildlife.

#### Saturday, May 11th, 10 AM—Explore Mammals– Carnivores, Herbivores and Omnivores

Look at mammals from around the world and their skulls, feet, and teeth to learn how they are adapted to live in different habitats. Look at their hoofs and feet to learn about how they are adapted to help mammals. Find mammals that run fast and some that can climb a tree. Make a mammal craft to take home.

#### Saturday, May 11, 4 PM to 6 PM —Transitions Opening Reception

*Transitions, the 2024 art exhibition is the* result of a collaboration between the L.C. Bates Museum staff and two Colby College students, Sofia Escobar Amaya and Lee Trombly under the supervision of Professor Véronique Plesch.

#### Saturday, May 18, 10 AM—NISE Earth and Space Activities

Come learn about some of the techniques used by NASA scientists to explore and understand our universe, through a series of fun and informative hands-on activities including: Stomp Rockets \* Mars Rover Game \* Discovering Distant Planets \* Moon Craters \* and more! Plus, discover the construction and principles behind a working refractor telescope with the GALILEOSCOPE!

#### Saturday, May 25th, 10 AM— Audubon's Revenge

Let your imagination run wild as we invent fantastic new creatures by combining parts of existing animals in the museum—using adapted pencils, of course! This fun activity helps kids think about adaptations and the "creativity" we observe in some animals' naturally selected traits. Can you invent a chimera stranger than the duck-billed platypus?

**When youth visit the museum they can enjoy animal and bird scavenger hunts or draw and animal as they explore in the galleries.**

Museum Hours  
Wednesday, Thursday, Friday and Saturday 10 AM to 4:30 PM.  
Or other times by appointment.  
Weekly Saturday Morning Programs at 10 AM  
Adults \$4.00 Youth Under 18 \$1.00  
Group Rates  
Call or email the museum to set up a group or school program.

#### L. C. Bates Museum At Good Will-Hinckley

Route 201, P.O. Box 159  
Hinckley, ME 04944

207-238-4250 • [lcbates@gwh.org](mailto:lcbates@gwh.org)  
[www.gwh.org/lcbates](http://www.gwh.org/lcbates)  
Visit us on [Facebook](https://www.facebook.com/lcbates)



To remove your name from our mailing list, please [click here](#).

Questions or comments? E-mail us at [lcbates@gwh.org](mailto:lcbates@gwh.org) or call 207-238-4250